



# Crosscut

Newsletter of the Witwatersrand Woodworkers' Association  
PO Box 411346, Craighall, 2024, South Africa

◀ Shutter-plywood boxes being assembled with biscuits.

Secretary : Ken Mutch [ken.woodman AT gmail.com](mailto:ken.woodman@gmail.com) Editor: Trevor Pope [tpope AT iafrica.com](mailto:tpope AT iafrica.com)

All written content and opinions are those of the editor, unless stated. © Copyright reserved. Go to [www.wwa.org.za](http://www.wwa.org.za) for back issues of Crosscut.

**Next General Club Meeting on Wednesday, the 8<sup>th</sup> May 2013** from 18h00 at WWA clubhouse at the Living Link Hall. Annual General Meeting – see below for details.

**Next Turner's monthly meeting is on Monday, the 6<sup>th</sup> May 2013** at 18h00 at the WWA clubhouse at the Living Link Hall. Turning a Ball – Part 2 – practical demonstrations of various methods.

## News

**March Turner's Meeting** – Chris van Heeswijk explained the theory behind the various approaches to turning a ball on the lathe. Copies of the diagrams Chris presented appear below.

**March Meeting** – Peter Middleton demonstrated the use a Black & Decker half blind dovetail jig with his vintage Elu router to make the sides of a box – top picture. Peter showed the steps required for his particular jig, but these may differ, depending on the jig used. Peter shows the tight fit achieved in the lower picture.



## Club Notices:

**Spring Challenge** with a Braai. The theme is “A Toy for Westview Clinic” Barries to do the judging and we could also possibly invite Daphne to be another judge. There will also be a “Table Lamp Challenge” with both turned and non-turned entries welcome. There will also be a Turners Challenge for you to demonstrate your skills on the day making a sphere for advanced turners or a mushroom for beginners – prizes for the best.

**WWA Open Day** – provisional date - 9 November at Parkhurst Recreation hall. We will look at including other societies & member sales.

**Pretoria Woodwork Exhibition / Houtwerk Uitstalling.** The Woodworking Association of Pretoria will be again holding their annual exhibition at the New Hope School on the **05<sup>th</sup> Oct 2013** from 08h00 to 14h00. (The New Hope School is a specialist school for children with various disabilities.) The school is in Cecilia, just West of the N1, close to the Atterbury Off-ramp. GPS co-ords S 25° 46' 43.70", E 28° 16' 02.21". See [www.ptawoodworkers.com](http://www.ptawoodworkers.com) or contact 084 515 2773 for more information.

**AGM and New Committee.** Notice is hereby given of the annual general meeting for the Wits Woodworking Association that will take place on **Wednesday, the 8<sup>th</sup> May 2013** at the Living Link Hall at 18h00. Items on the agenda:

- Report from the 2012/3 chair. Turners' report.
- Acceptance of the treasurer's report for 2012/3. Approval of the 2013/4 subscriptions and budget for 2013/4.
- Ratification of new Life Members (Ivor Appleton & Eddie Marchio)
- Election of office bearers and committee members for 2013/4. Nominations are welcome for all positions, In particular, we will require volunteers for the position of Treasurer, as Steven Barrett has served his three year term. Steven, who is the present Treasurer is willing to make himself available for chair of the Turners section.

*Volunteers for ordinary committee positions are always welcome. Having fun is definitely part of the job description!*

- *Address from the 2013/4 chair.*

*If you are unable to attend, please can you register a proxy vote with the secretary? A proxy is somebody who is able to vote on your behalf at the meeting, so that the meeting can have sufficient votes to register a quorum, thereby ensuring sufficient participation at the AGM to satisfy the WWA constitution. The proxy form was included with the formal email notification of the AGM sent out by the secretary.*

### **ANNUAL MEMBERSHIP SUBSCRIPTIONS: 2013 / 2014 year**

Subject to approval at the meeting, membership subscriptions for 2013 / 2014 are due on 1 May 2013. The amount will be confirmed at the AGM. Delivery of Crosscut by email is included, postal delivery of Crosscut is R80- extra per year. A detailed invoice will follow next month.

**Saturday Workshop.** Ken Bullivant previously held the Saturday workshop at the clubhouse, but when we moved from Helpmekeer, he decided to move it to his house in Boksburg. Currently 5 of our members attend these meetings and more are welcome. The location is 13 Franklin Avenue, Comet, Boksburg on the first Saturday of the month from 09:00 to 12:00. They decide on an annual project and work throughout the year making it. Individual projects are discussed and problems solved. Contact Ken on 082 809 0020 if you wish to take part.

#### **Please Note:**

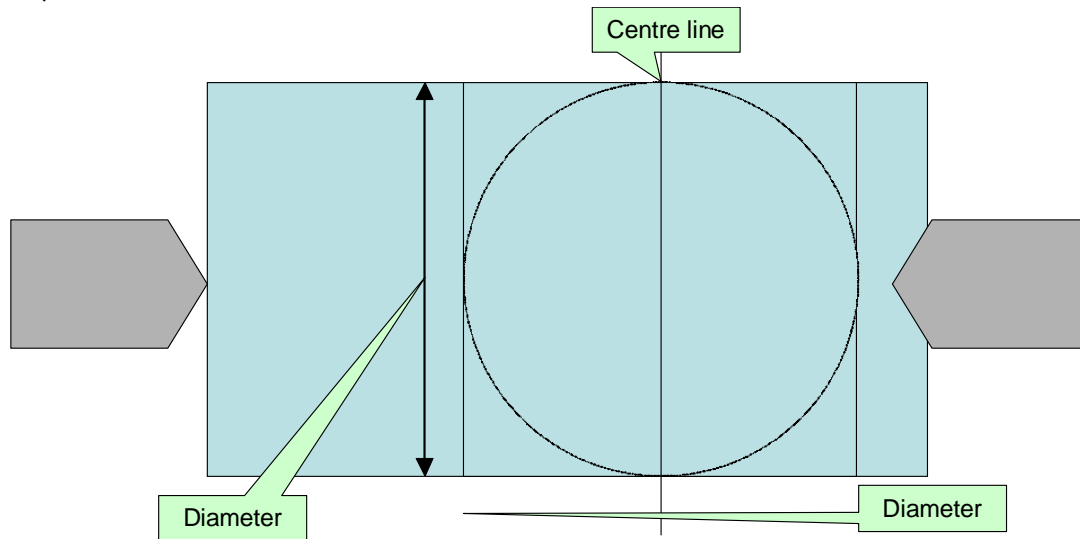
**Toymakers.** The toymakers meet on the first and third Mondays of every month, at 09h00 till 12h00 at the new clubhouse. Contact Eddie Marchio on 011-678-8062 or [rm22 AT mweb.co.za](mailto:rm22@mweb.co.za) for more information.

**Wednesday Workshop.** The Wednesday evening workshops are on the first and third Wednesdays of every month at the new clubhouse, from 18h00 till 20h00. Contact Grant Mackay on 082-391-9769 or [mackay.grant AT gmail.com](mailto:mackay.grant@gmail.com) or [gmackay AT worldonline.co.za](mailto:gmackay@worldonline.co.za) for more information.

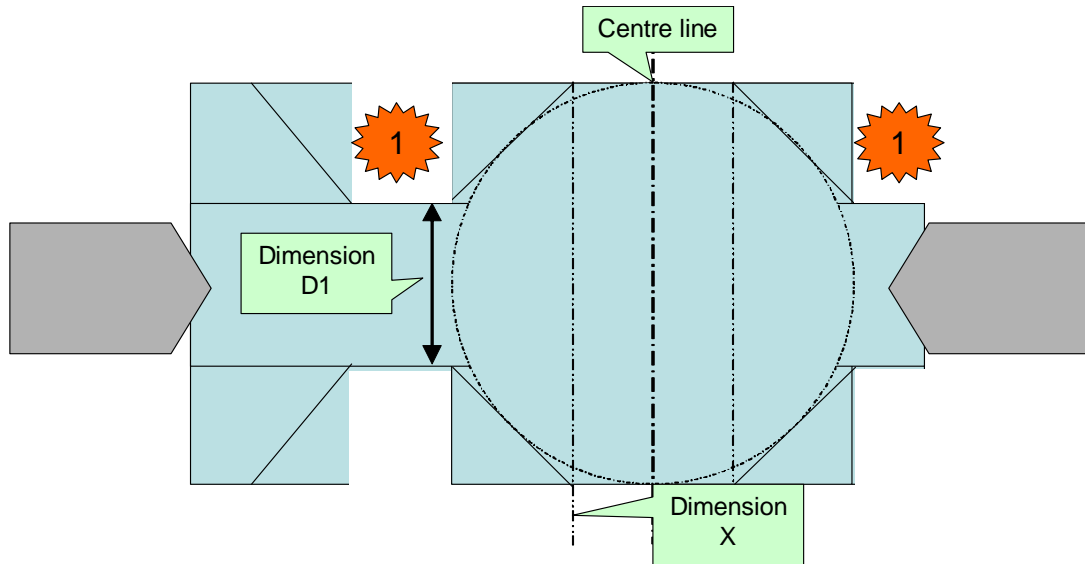
## **Diagrams showing steps in turning a ball**

Taken from Chris van Heeswijk's presentation at the April Turner's meeting and reformatted for the newsletter.

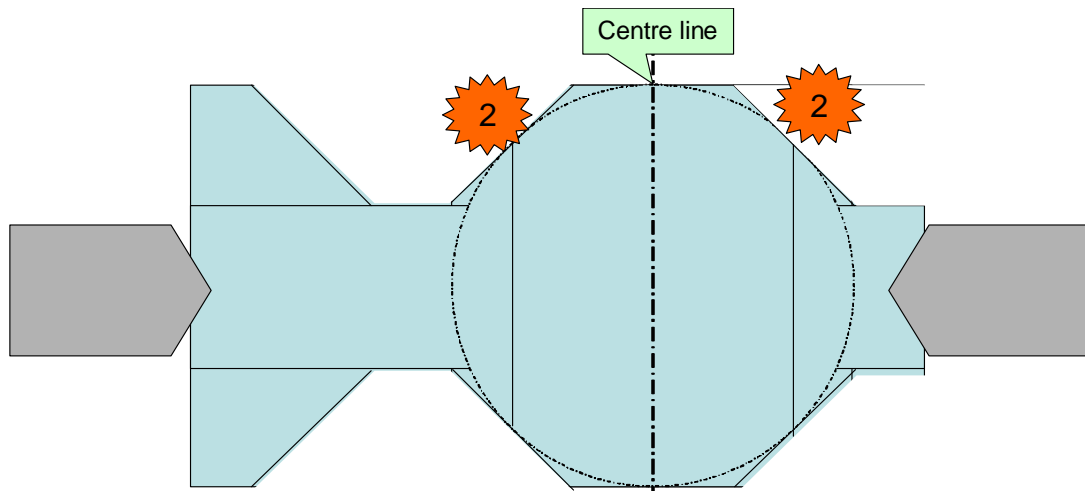
**To start, prepare the blank:** Turn cylinder to the diameter of the desired sphere. Mark off the sphere's centre line, and the sphere radius each side of the centreline.



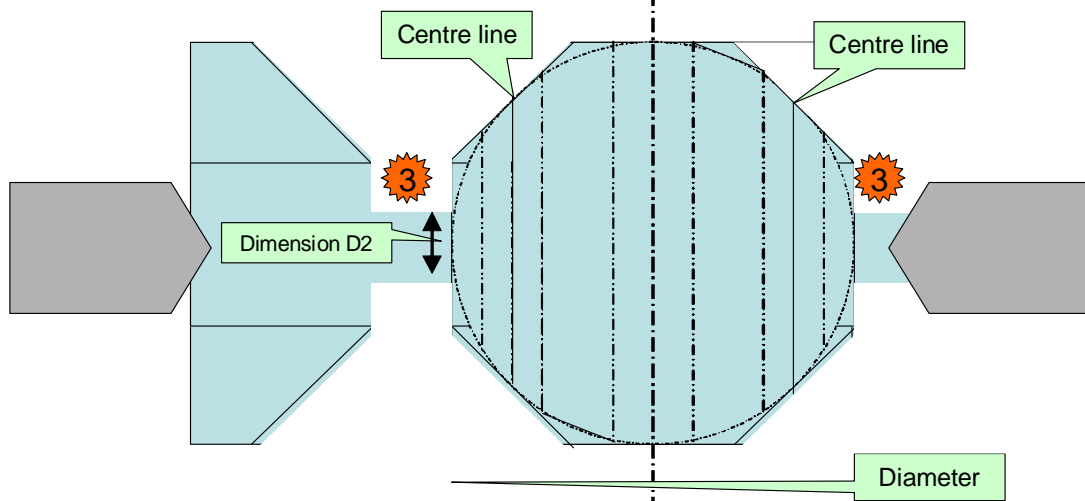
**Step 1:** At the two lines showing the sphere radius, use a parting tool to turn down to a spigot with diameter  $D1 = 0.4142 \times$  sphere diameter.  
 Mark off the two lines either side of the centreline, where  $X1 = 0.2071 \times$  sphere diameter.



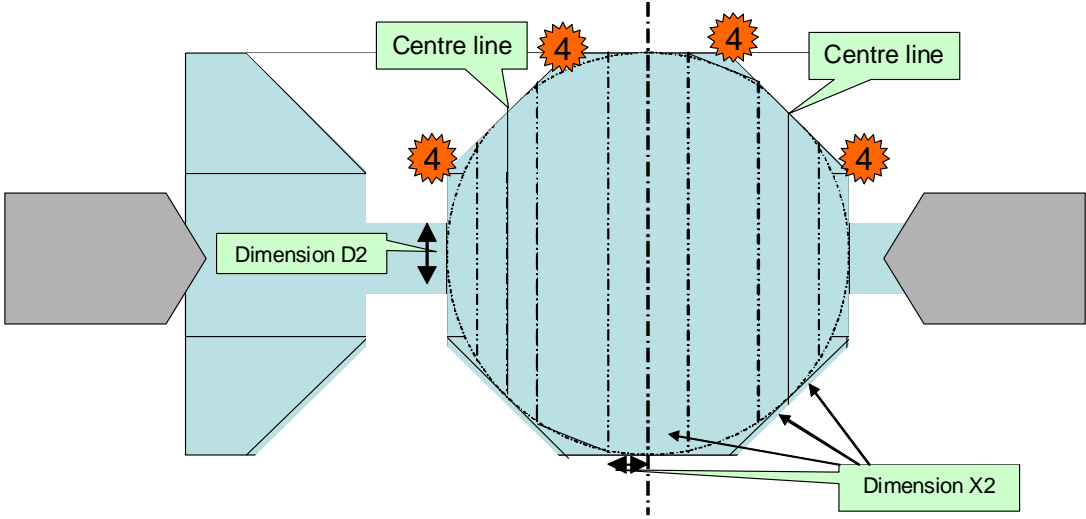
**Step 2:** Remove the material between the two new lines and the spigot, taking care not to undercut the facet, and to leave the line visible. The shape is now octagonal. Mark off the two centre lines of the newly created facets.



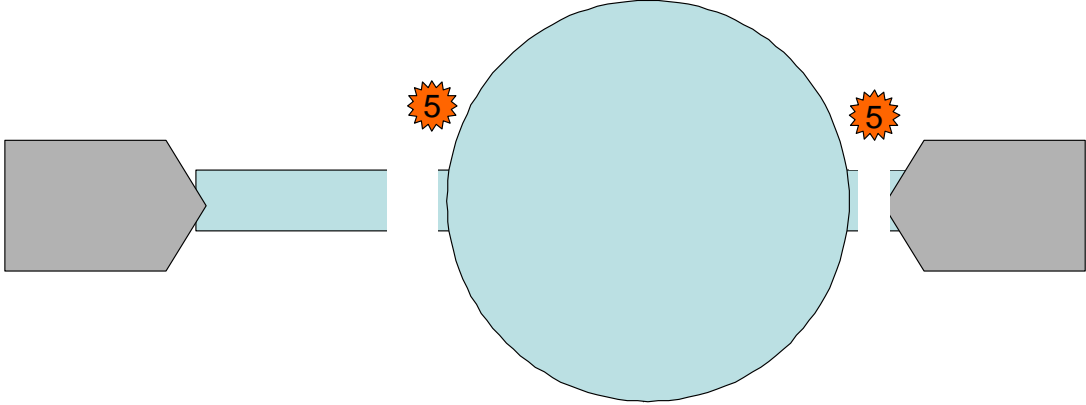
**Step 3:** At the two lines showing the sphere radius, use a parting tool to turn down to a spigot with diameter  $D2 = 0.1989 \times$  sphere diameter.  
 Mark off the two lines either side of the three centrelines, where  $X2 = 0.0995 \times$  sphere diameter.



**Step 4:** Remove the material between the pairs of new lines, and new lines and the spigots, taking care not to undercut the facet, and to leave the line visible. The shape is now almost spherical. Remove the final remaining facets to create a smooth circular surface.



**Step 5:** Cut the last spigot material, taking care not to undercut the facet, and to leave two stubs.



**Step 6:** Mount the sphere between centres in cupped or coned supports to remove the final stubs. Sand through the grits to 400 grit, rotating the sphere within the cups to ensure it remains spherical. Finish with your choice of sealer.

